

Stoughton Z-Plate® Vans With State-Of-The-Art Composite Technology.

Stoughton's revolutionary Z-Plate® vans are built from composite laminate panels. These unique, patented poly-laminate panels are manufactured using epoxy coated inner and outer galvanized steel skin for superior durability even in the most demanding applications.

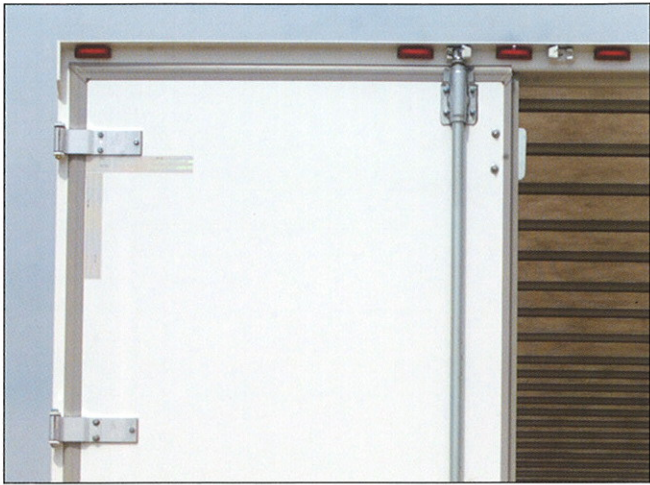
If repairs are required, Stoughton's Z-Plate® panel design allows easy panel replacement without requiring the removal of adjoining panels common with other plate trailer designs. This means less time in the shop and more time on the road.

Stoughton's revolutionary Z-Plate® van features include solid, full width oak floors, extra wide extruded aluminum scuff rails and the unique recessed splice plate with "A" slots for better cargo control using any standard cargo restraint system.

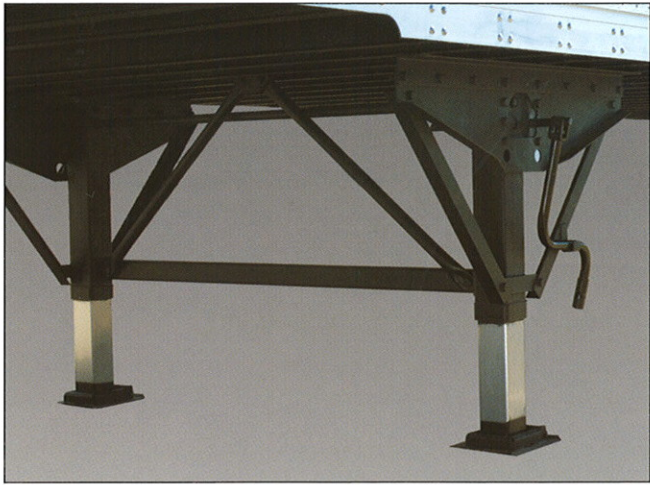
Take a closer look at the Z-Plate® Composite Van from Stoughton and you'll see why fleets are calling it the future of trailer technology and design.



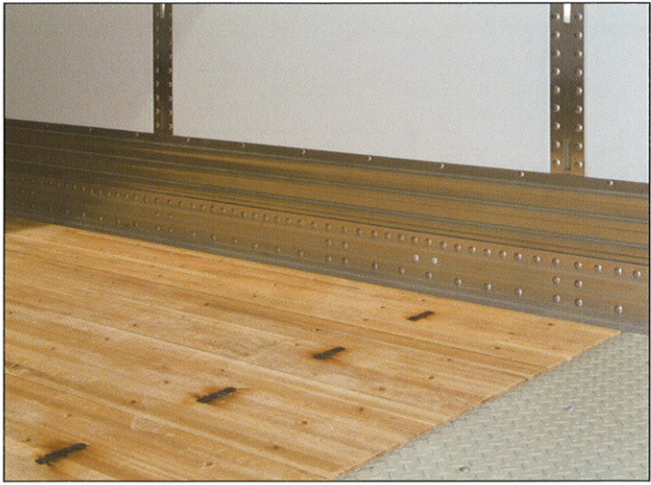
Stoughton...The Difference is Quality



Front and rear top mounted clearance lights and rear ID lights are LED.



Standard landing gear features heavy-duty, two speed legs with 10" low profile sand shoes. The landing gear sub-frame is bolted onto the mounting channels for easy repair in case of damage. Standard bracing provides for maximum structural integrity.



Z-Plate® panels are constructed using our exclusive recessed splice plate design to provide a smooth, snag free inner wall system.

Should panel replacement be required, the damaged panel can be easily removed using simple tools without disturbing the structural integrity of the adjacent panels. Stoughton Z-Plate® vans are designed with an integral, extra-wide 11" corrugated steel and aluminum lower scuff rail to reduce damage from careless loading and unloading. Floor is full width, solid laminated oak.



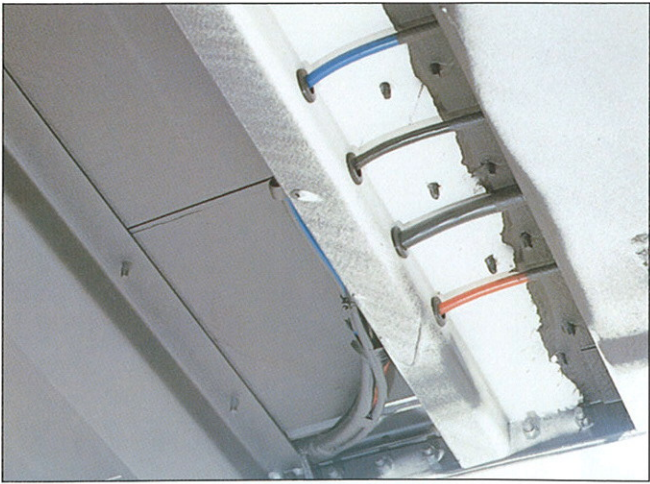
Roof bows are constructed of heavy-duty galvanized steel set on 24"/16"/24" centers with a one-piece roof skin for maximum strength and durability.



Front corners are constructed of a single, heavy-duty aluminum extrusion with mill finish. This unique design provides maximum structural integrity while allowing any necessary repairs to be made quickly and easily.



The Z-Plate® van has a full 110" inside height/rear door opening and 101" inside width scuff to scuff, and rear door opening for maximum payload. Taillights are recessed for maximum protection from damage. The reinforced rear bumper meets DOT requirements and is bolted on for easy repair if necessary. Rubber dock bumpers are standard.



New integral air and wire cavity in the lower rail protects against damage from road debris or other accidental damage.



Exterior splice plates are coated with a tough baked on epoxy finish to match the exterior panel walls. Splice plates are riveted to composite panels 1 1/2" on center for added strength and durability.

The rear doorframe and entire king pin assembly of the Stoughton Z-Plate® van are shot/grit blasted to white steel prior to priming. Stoughton uses a specially formulated two-part epoxy primer containing 72.4% zinc (by weight — dry), which is oven baked prior to receiving the finish coat. The finish coat is a two-part Urethane epoxy, which is also oven baked after application. This extremely durable finishing system significantly reduces problems from rust and corrosion common with many other trailers. This attention to detail and commitment to quality is just one reason that more and more fleets are spec'ing Stoughton trailers.

