

Designed for light weight. Built for rugged dependability.

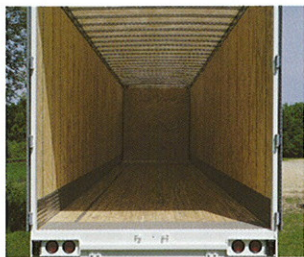
Haul more freight, for more miles for the lowest cost per mile. That is the goal of every fleet. Now, the Stoughton AV trailer can help you meet that goal. Every Stoughton AV trailer is built to the highest quality standards in the industry to provide years of trouble free operation with very little maintenance. If you're looking for the best return on your investment, call your local Stoughton dealer and let him show you how you can improve your bottom line with Stoughton trailers.

Stoughton...We'll change the way you look at trailers.

New Stoughton AV trailers have identification and clearance lights mounted on the upper rear door frame to comply with DOT visibility requirements. The built-in rain gutter diverts runoff away from loading area. These design features are standard on all Stoughton AV trailers.



Built-in reinforcements in rear frame provide extra strength to help prevent racking without sacrificing inside door clearance.



Standard 98" x 109-7/8" rear door opening allows easy access with an inside capacity of 3577 cubic feet for a 48' trailer and 3953 cubic feet for a 53' model.

Dual tensioned roof is supported by heavy-duty 16GA hat section bows. Roof bows are secured to top rail by two serrated shank bolts for quick one man replacement.



New front upper corner is made from a single aluminum casting and is designed with beveled corner panels for ease of maintenance or replacement if damaged.



Kingpin subframe features S.A.E. kingpin, cross head type, AAR rated with 3-1/2" shallow depth sandwich of hi-tensile 1/4" steel plates.



Landing gear subframe spans 5 cross members and has bolted, replaceable, main mounting plate, built-in cross channel, with both forward and aft braces standard.



Modular wiring system is designed for quick and easy replacement of damaged lights. This simplified system utilizes standard sealed beam lamps.

