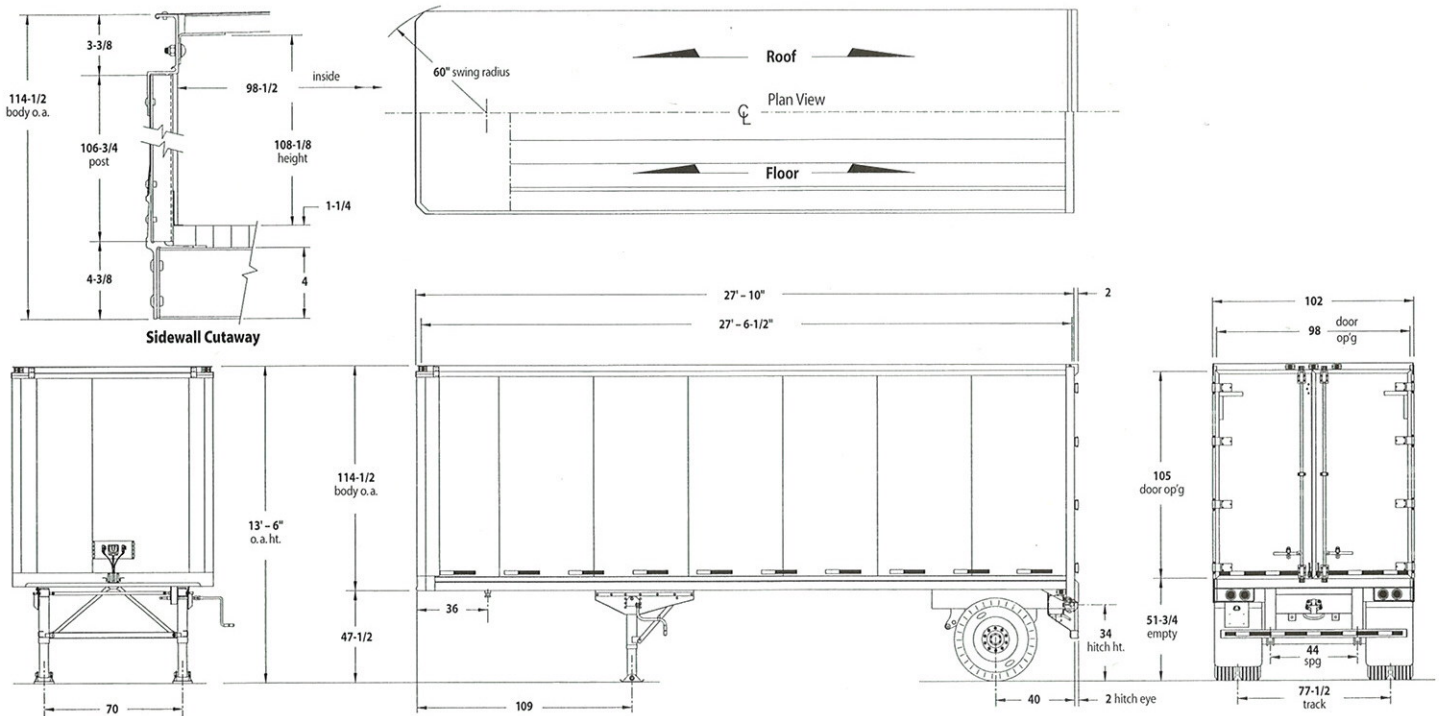


Standard Specifications – Doubles Van



Note: Drawing shows DAVW model only.

Assy. No. Description

1	Base Models – DEVV (Doubles Exterior Post Van), DFWV (Doubles Fiberglass Reinforced Plywood Van), DAVW (Doubles Aluminum Smoothside Van), DPVW (Doubles Plate Wall Van).
2	Length – Refer to drawing.
3	Width – Refer to drawing.
4	Height – Refer to drawing.
5	Capacity – 20,000 lbs. brake rated per axle - 15 ton payload.
6	Suspension – Progressive action 3-leaf springs with straddle mounted fabricated type spring hangers.
7	Axle – 5" tubular beam, bearings. INNER - HM218210. OUTER - HM212049/212011.
8	Brakes – Quick change, 16-1/2" x 7", non-asbestos, meets requirements of Federal Motor Vehicle Safety Standard No. 121 and filtered air couplers.
9	Wheels – As requested.
10	Oil Seals – Semi-fluid grease with non-vented hub cap.
11	Tires – As requested.
12	Landing Gear – Two-speed vertical, tubular legs with 10" x 10" low profile sand shoes, and roadside crank.
13	Suspension Subframe – Narrow mounted G-shaped longitudinals with spring hanger cross channels and reinforcements for air operated pintle hook, located per SAE standards.
14	Landing Gear Subframe – Wide inside-type mounting, channel longitudinals spanning five cross members with cross and aft diagonal braces.
15	Upper Coupler Subframe – SAE king-pin, double-spool type, built into structure, 5-1/4" deep, 1/4" hi-tensile sandwich unitized with full width upper and lower plates and internal reinforcements. Full width 3/16" pickup plate.
16	Cross Members – 12" on center, 4" x 2" I-beam type, hi-tensile steel, secured to lower rail with 3/8" aluminum rivets.

Assy. No. Description

17	Lower Rails – Extruded aluminum, alloy 6061-T6.
18	Floor – 1-1/4" laminated oak butted to upper coupler with 14 ga. steel hat-shape at longitudinal center line for brake and electrical lines.
19	Front Wall – Bevel corner, .050" aluminum prepainted panels, four 16 ga. steel hat-shape posts x 2 1/2" deep, equally spaced with heavy-duty lower sill across front and bevel corners.
20	Side Walls – .040 aluminum sheets, .144 aluminum plate or fiberglass reinforced plywood based on specific model.
21	Upper Rail – Extruded aluminum, alloy 6061-T6.
22	Roof – 16 ga. galvanized bows, 24" on center, hat-shape, 1-1/8" deep with 3/4" crown, pre-tensioned against .032" one-piece aluminum steel - edge hemmed over upper rail and riveted to outside.
23	Rear Frame – 3/16" hi-tensile steel corner posts, 2" x 4" tubular shape welded rigid with 4-1/8" deep header and 4" lower sill and threshold member.
24	Rear Doors – 3/4" metal clad plywood, gaskets are dual durometer PVC, four galvanized hinges and one galvanized lock bar per door, loop style door holdbacks.
25	Lining – 1/4" exterior grade plywood, FRONT: Full height on all models, DAVW (only) full height sides, all others none.
26	Electrical – Stoughton's simplified modular wiring harnesses, sealed and molded to accept plug-in sealed lamps. 12-volt w/7-way socket per DOT/Federal MVSS-108. 7-way socket at rear per SAE standards.
27	Bumper – Corner bars, cross-channel and light guards welded rigid to rear sill. DOT drop-type step included.
28	Mud Flaps – 24" wide anti-sail.
29	Painting – Underframe undercoated – prepainted white front and side panels, steel body parts painted white, including rear doors.

Specifications are subject to change without notice.

STOUGHTONTM
Stoughton Trailers, Inc.

416 S. Academy Street ■ Stoughton, Wisconsin 53589

608/873-2500 ■ FAX: 608/873-2575 ■ www.stoughton-trailers.com