



DARKWING



ALUMINUM FLATBEDS

SALES OFFICES

CANADA

BOUCHERVILLE, QC 514.527.8031
SAINT-NICOLAS, QC 418.831.2007
SAINT-ANTONIN, QC 418.867.5415
MISSISSAUGA, ON 905.696.9789
TRURO, NS 902.895.3112

UNITED STATES

BANGOR, ME 207.843.6005
DALLAS/FT.WORTH, TX 817.385.0777
PHOENIX, AZ 480.203.0111
ORAN, MO 573.262.2166
PITTSBURGH, PA 724.294.0007

manac

WHATEVER THE ROAD

www.manac.ca • www.manac.us

STURDY, RELIABLE, AND LONG LASTING. TO TAKE YOU WHEREVER YOU WANT.

< - - - - - **HOWEVER YOU WANT.** - - - - - >



100% ALUMINUM



BUILT RUGGED. BUILT LIGHT

Manac.

The muscle, endurance, and performance to make you fly. The strength-to-weight ratio to make you efficient.

Features

- **Three-piece riveted main beam**
Benefit: Guaranteed connection
- **Bolted and overlapped front sill**
Benefit: Allows for thermal expansion of floor planks
- **Extreme duty landing gear support structure**
Benefit: Directly supported by main beams
- **Bolted underguard CMVSS-223**
Benefit: Easy to repair
- **Extruded heavy duty aluminum corner, including moose rubber bumper**
Benefit: Increased impact resistance

Certain features shown here may be changed without notice.



- Solid rub rail spacers (5,000 lb rated Anchor point)
- 6" cambered beams, 42" apart
- Steel structure components completely shot blasted and painted prior to assembly
- All air lines are color coded and mounted under crossmembers
- Air system with 4 sensors and 2 monitors
- Suspension bracing tested to 20,000 cycles of "torsion test"
- LED lights

ADDITIONAL OPTIONS



60,000 lb capacity coil package



Variety of axles configuration available



Log bunk with removable stake kit



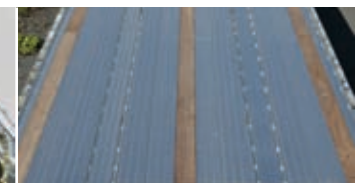
Extra crossmember at rear
Benefit: 16,000 lb capacity for lift truck / dock loading



Hendrickson AANT-23 standard suspension (AANT-300 available)
Benefit: Light weight



Double "L" sliding winch track up to very rear
Benefit: No need for different cargo devices



Aluminum structural floor with six cargo tracks and wood nailers – no screws or welds
Benefit: Maximum cargo securement flexibility